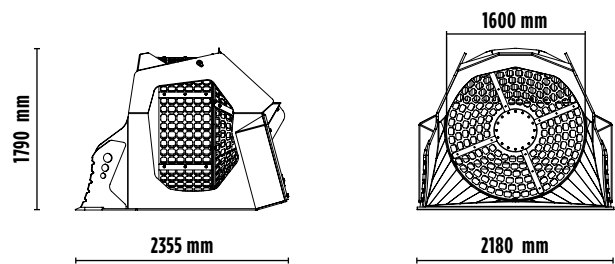
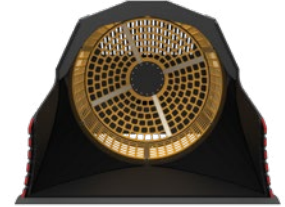


MB-LS220 S2

MB[®]
THE CRUSHING EVOLUTION




ACCESSORIES

- RECOMMENDED SPARE PARTS KIT
- HOUR METER
- 24 MONTHS WARRANTY



SPECIFICATIONS

EQUIPMENT	 ≥ 12 < 25 Ton
LOAD CAPACITY	2,40 m ³
GRID DIAMETER	1600 mm
DIMENSIONS	2355 x 2180 H 1790 mm
OIL FLOW	120 l/min.
PRESSURE COUNTER PRESSURE	> 200 < 40 bar
WEIGHT	2,80 Ton

AREAS OF APPLICATION



RECYCLING



MEDIUM-SCALE
RESIDENTIAL
SITES



SMALL-SCALE
COMMERCIAL
SITES



DEMOLITION



FOUNDRIES



INDUSTRY



QUARRIES



MINES

The data provided above is not binding, as the manufacturer reserves itself the right to make improvements to its products at any time and with no advance notice. References to excavator weights are approximate and many may be subject to changes.

Rev. 2020 / 07

in f t You Tube YOU TUB

WWW.MBCRUSHER.COM