

FSE SERIES



EM POWER
LEADS
THE WAY

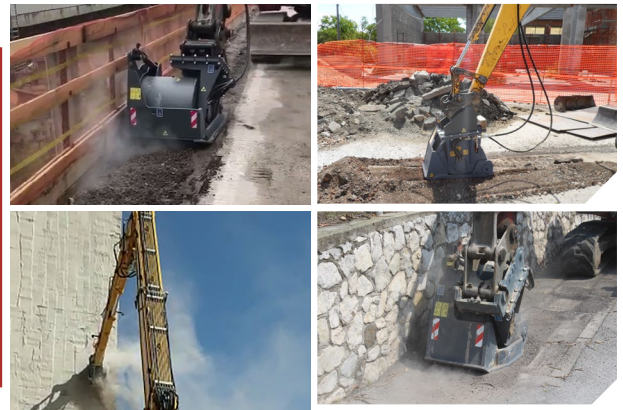
COLD PLANER FOR EXCAVATOR



With the purpose of dismantling asphalt of the road surface, concrete in squares and scraping the rock or simply creating crossings or tracks on paved surfaces. It is produced in 5 models from 20 to 60 cm wide and is suitable for excavators. It can work on high heights, vertical walls, pylons in viaducts.

STRENGTHS

- Vertical, horizontal and oblique milling
- Customized bracket according to the excavator
- Constant milling depth
- Tilting head
- Easy and uncomplicated maintenance



Canalization / Subsoil



Demolitions



Construction industry



Tunnel / Closed spaces



Agricultural / Forest maintenance



Recycling



Quarries / Mines



Streets

OPTIONAL

- Hydraulic depth adjustment
- Milling drum with different widths and sizes
- Tools for concrete
- Customized upper bracket for operating machine

| DATA SHEET | | FSE 20.10 | FSE 30.15 | FSE 35.15 | FSE 45.20 | FSE 60.23 |
|--------------------------------|-----------|--|--------------------|--------------------|--------------------|----------------------|
| Milling Width | mm | 200 | 300 | 350 | 450 | 600 |
| Maximum depth | mm | 80 | 120 | 120 | 170 | 200 |
| Weight | kg | 180 | 370 | 480 | 720 | 1150 |
| Asphalt standard teeth | n. | 22 | 32 | 37 | 47 | 62 |
| Oil flow | l/min | 20/40 | 30/60 | 30/60 | 80/140 | 100/160 |
| Pressure | bar | 200/100 | 250/150 | 250/150 | 300/150 | 300/150 |
| Min. distance from wall | mm | 40 | 40 | 40 | 60 | 70 |
| Depth adjustment | | Mechanic as standard / Hydraulic as optional | | | | |
| Excavator | ton | ≥ 1,5 < 3 | ≥ 3 < 5 | ≥ 5 < 7 | ≥ 7 < 13 | ≥ 13 ≤ 25 |
| Dimensions | w x d x H | 600 x 1000 x H 750 | 700 x 1000 x H 750 | 750 x 1000 x H 750 | 900 x 1200 x H 850 | 1100 x 1250 x H 1000 |

Weights and dimensions could vary without notice. Weight does not include the coupler.